



**iWear® VR920
Firmware Update Instructions**



Read Before Installing Update

Please read the following instructions in their entirety prior to beginning your firmware update. Due to the nature of updating firmware, if the instructions are not followed explicitly, your VR920 could be rendered inoperable.

Update Steps

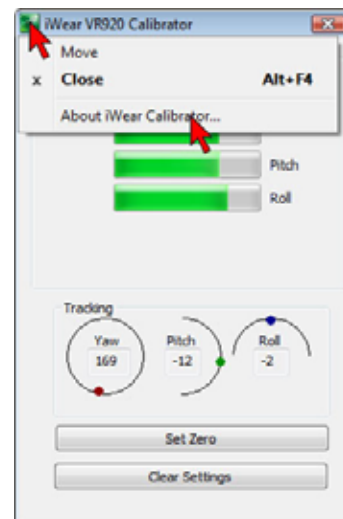
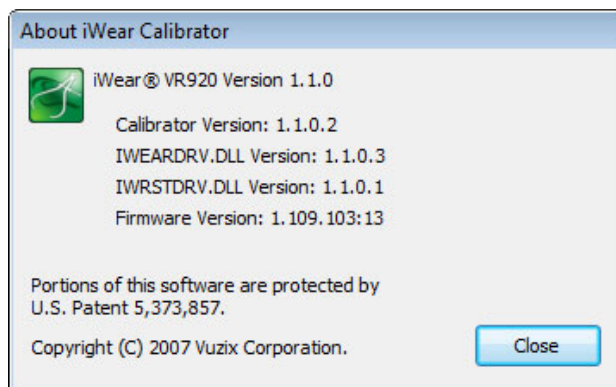
- 1 Review the prerequisites for a firmware update.** You must have iWear software version 1.1.0 or greater installed before you can proceed.
- 2 First time update firmware update driver install.** The first time you do a VR920 firmware update, first you must install a special firmware driver. (Separate sections for Windows XP and Vista.)
- 3 Firmware update installation.** Disconnect and reconnect your VR920 USB cable a few times, click some buttons and you're all done.

Before You Begin

Prior to updating your VR920 firmware you must have the iWear VR920 software version 1.1.0 or greater already installed on your computer. You can check the version of your iWear software through the iWear Calibrator application.

To verify your installed software's version:

- ▶ **Open the iWear Calibrator program.**
- ▶ **Click on the iWear VR920 Calibrator icon in the top-right corner of the window.**
- ▶ **Select the "About iWear Calibrator..." menu item.**



Your iWear VR920 version number should be the same or greater than that shown in the above illustration.

- ▶ **Quit the iWear Calibrator program.**

First Time VR920 Update – Windows XP



If this is the first time you have updated your VR920, you will be advised that a firmware update driver must be installed.

If this message appears, continue following the installation instructions proved immediately below.

If this message does not appear, skip the remainder of this section and proceed directly to “Firmware Install.”

- ▶ **If presented with the above message, press its “OK” button.**

A Found New Hardware Wizard will offer you three options for installing firmware update device drivers.

- ▶ **In the New Hardware Wizard window, select the “No, not at this time” option, and then press “Next”.**

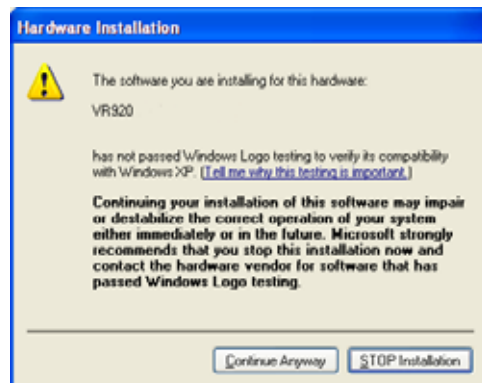


- ▶ **On the next screen, select the “Install the software automatically (Recommended)” option, and press the “Next” button.**

The installation of the firmware update device drivers will now begin.

If a Hardware Installation message advises you the VR920 has not yet passed the Windows Logo testing or that it’s a non-signed driver, press the “Continue Anyway” button.

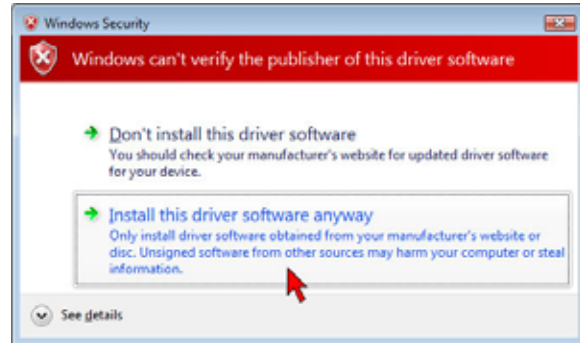
- ▶ **When the New Hardware Wizard has completed its portion of the installation, press the “Finish” button.**



First Time VR920 Update – Windows Vista

If this is the first time you have updated your VR920, you will be advised that Windows can't verify the publisher of the driver software.

If this message appears, press the “Install this driver software anyway” button, and then continue to the Firmware install section.



Firmware Install

- ▶ If any of your iWear software is running, quit it before proceeding. Neither your iWearMonitor or iWear VR920 Calibrator can be running during the firmware update process.

Note: If any iWear software is running, it will interfere with the firmware update data transfer, causing an update failure.

- ▶ Make sure your VR920's USB connection is plugged in.
- ▶ Double-click the VR920_Update.exe

A message in the top-right corner should confirm your VR920 has been found.

If your VR920 is not found, ensure that it is connected to your PC and that its software is installed and its version number matches that indicated above in the “Before You Begin” section of this document.



If a message displayed below the version numbers indicates your VR920 is not compatible with this firmware update, contact Vuzix's Customer Service for further instruction.

If the “Found VR920” message is displayed and you have iWear software version 1.1.0 or greater installed;

- ▶ Press the “Update” button.

During the installation process, on-screen instructions will direct to disconnect and then reconnect your VR920. This occurs several times; a process required for resetting the control board inside your VR920.



When requested to do so:

- ▶ Disconnect your VR920's USB connector.
- ▶ Wait a brief moment – a couple of seconds.
- ▶ Then press the “OK” button.

Do not disconnect your VR920's VGA connector during this procedure.

- ▶ **When directed to do so, reconnect the VR920's USB connector, wait a couple of seconds and then press the "OK" button.**

When the USB connector has been reconnected another stage of the update process will commence. One of these stages takes about 10 minutes to complete, so don't worry, the update is proceeding correctly. A message will be displayed above the progress bar when this is occurring.

- ▶ **When the update process is complete, you should receive the message "Your firmware is up to date."**

In some cases, such as when recovering from a prior unsuccessful firmware update attempt, this message may not appear. Should this happen, repeat the update process.

